

Emma

BY KATHY HALL



Emma Quilt designed by:
Kathy Hall

Quilt Size: **72" x 84"**

andoverfabrics.com



About Emma

Emma features a scrolling Jacobean floral focal print and a traditional foulard stripe. Designed with two colorways in mind, the darker is a mix of blacks and cheddars and the other a combination of early repro reds, blues and tans.

— *Kathy Hall*



andover



makower uk
Concord Fabrics UK Ltd

Free Pattern Download Available

1384 Broadway New York, NY 10018
Tel. (800) 223-5678 • andoverfabrics.com

Emma Quilt



Introducing Andover Fabrics new collection: **EMMA** by Kathy Hall

Quilt designed by Kathy Hall

Quilt finishes 72" x 84"

This traditional block, especially popular in the 1930s, is known as Crossed Canoes, Twinkling Star, and Dragon Fly, as well as other names. The positive/negative image in the block's quadrants presents a striking visual. The eye travels diagonally in one direction, and then in the other. Careful preparation will make this a piecing success.

Cutting Directions

Note: Read assembly directions before cutting patches. All measurements are cut sizes and include ¼" seam allowances. WOF designates the width of fabric from selvedge to selvedge (approximately 42" wide). **Hint:** We suggest that you starch and iron fabrics before cutting them, to prevent stretching.

Cutting Directions for Dark Quilt

8 Creams From each: Cut patches for 5-6 blocks (42 blocks total)

Fabric A Cut (8) strips 2½" x WOF for binding
Cut bright patches for 4 blocks

Stripe Cut patches for 6 blocks
(Read Step 1 before cutting)

2 Brights From each: Cut patches for 4 blocks

4 Brights From each: Cut patches for 6 blocks

Backing Cut (2) panels 40" x 90", pieced to fit quilt top with overlap on all sides

Cutting Directions for Light Quilt

8 Creams From each: Cut patches for 5-6 blocks (42 blocks total)

Fabric B Cut (8) strips 2½" x WOF for binding
Cut patches for 7 blocks

Fabric C Cut patches for 6 blocks

Fabric D Cut patches for 7 blocks

Stripe Cut patches for 6 blocks
(Read Step 1 before cutting)

4 Brights From each: Cut patches for 4 blocks

Backing Cut (2) panels 40" x 90", pieced to fit quilt top with overlap on all sides

Fabric Requirements

8 Creams		Yardage for Dark Quilt	
8658-LB	8658 -LK	¾ yard each	
8660-LK	8661-LK	8659-LB	8659-LR
		8662-LK	8662-LN
*Fabric A	blocks	1⅛ yards	8775-K
Stripe	blocks	1⅛ yards	8771-KO
2 Brights	blocks	½ yard each	
8769-K	8774-K		
4 Brights	blocks	¾ yard each	
8770-KO	8772 -KR	8772-KV	8773-KR
Backing		5 yards	8770-KL
*includes binding			

Fabric Requirements

8 Creams		Yardage for Light Quilt	
same as in dark quilt		¾ yard each	
*Fabric B	blocks	1½ yards	8775-LR
Fabric C	blocks	¾ yard	8774-LN
Fabric D	blocks	1 yard	8773-LN
Stripe	blocks	1⅛ yards	8771-LR
4 Brights	blocks	½ yard each	
8769-L	8770-LN	8772-LT	8773-LB
Backing		5 yards	8775-L
*includes binding			

Cutting for 1 Block (either quilt):

Cream: Cut (2) Template 1
Cut (2) Template 2
Cut (2) Template 2 Reversed
Cut (2) Template 3

Bright/Stripe: Cut (2) Template 1
Cut (2) Template 2
Cut (2) Template 2 Reversed
Cut (2) Template 3

Emma Quilt

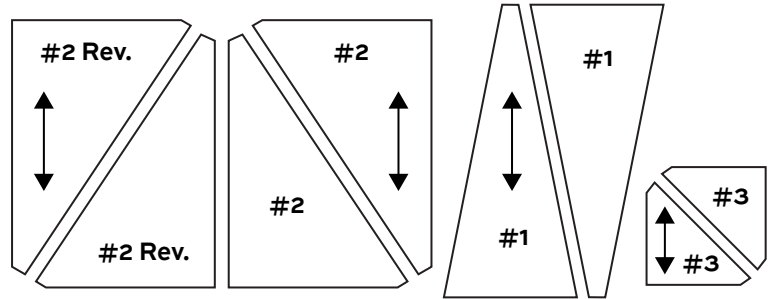
Making the Quilt

1. Make an acrylic pattern for each of the 4 patches. Poke a hole at each dot on the templates. Mark a dot through each hole on the wrong side of each fabric patch. Referring to the Cutting Diagram for cream or bright patches for 1 block, position the appropriate grain line of each template along the grain line of a fabric. For the stripe fabric only, refer to the Cutting Diagram for the stripe, and position the appropriate grain line of each template parallel with the striped print. This allows the stripe to remain vertical in the block.
2. Referring to the block diagram, match dots and sew patches 2 and 2 reversed to patch 1. Sew patch 3 to the corner. Press the square. It should measure 6½" unfinished. If it does not, adjust your stitching and pressing methods. Make 4 squares with the same 2 fabrics for each block. Join the 4 squares to make a block, positioning the patches as shown. When making the blocks with the stripe fabric, lay out all the patches until you are satisfied with the placement of the stripes. Make a total of 42 blocks.
3. Referring to the Quilt Diagram, make 7 rows of 6 blocks each, rotating the blocks as shown. Join the rows.

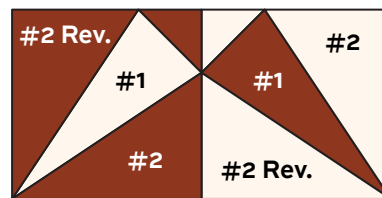
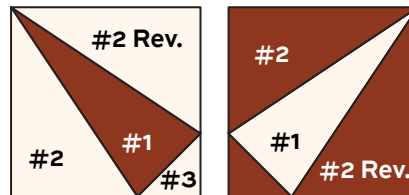
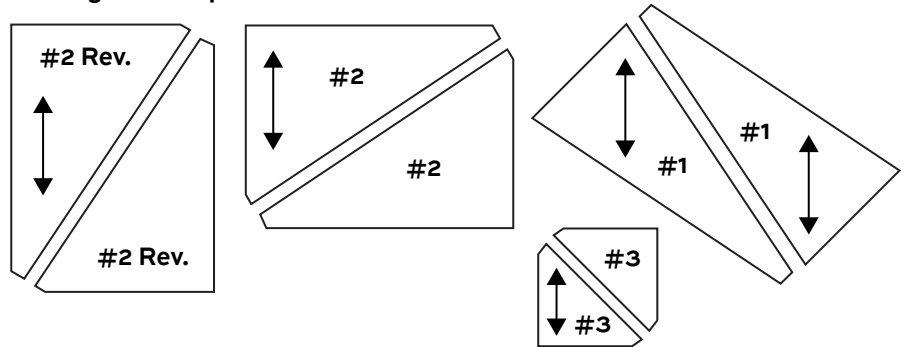
Finishing the Quilt

4. Layer the quilt with batting and backing and baste. Quilt in the ditch around block patches. Quilt ¼" away from the seam in each patch. Or if you prefer, quilt an overall pattern. Bind to finish the quilt.

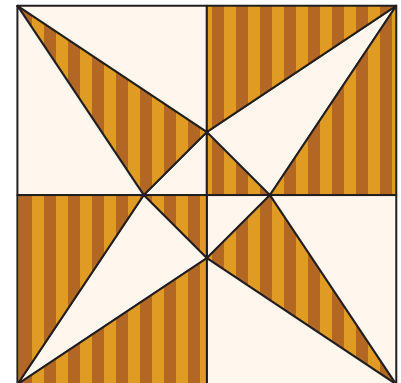
Cutting for 1 bright block
Cutting for Cream patches for 1 block



Cutting for 1 striped block



Bright Block – Make 36



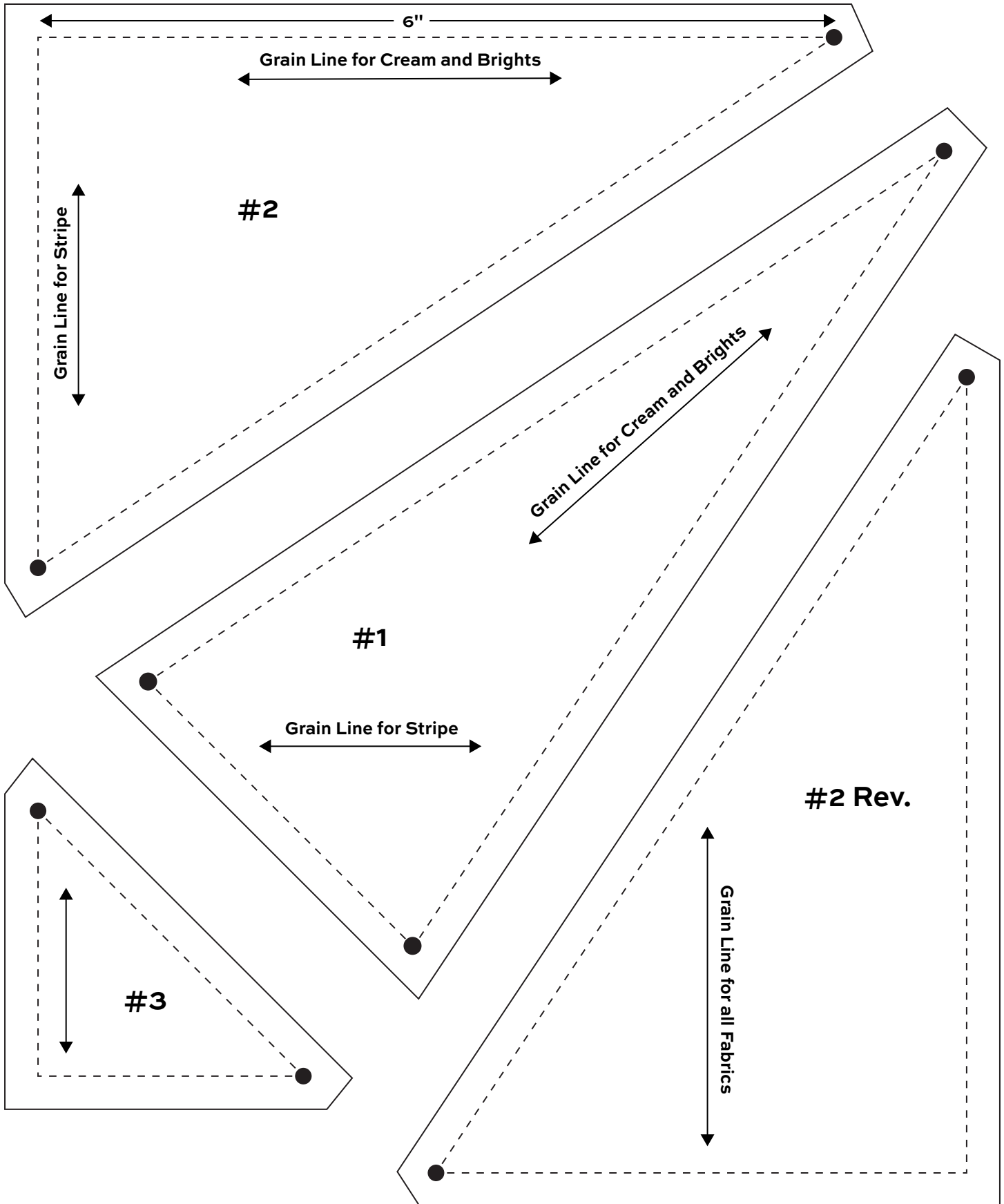
Striped Block – Make 6

Emma Quilt



Quilt Diagram

Emma Quilt





DARK COLORWAY



8769-K



8770-KL



8770-KO



8772-KR



8772-KV



8771-KO



8773-KR



8774-K



8775-K

LIGHT COLORWAY



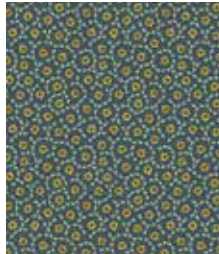
8769-L



8770-LN



8772-LT



8773-LB



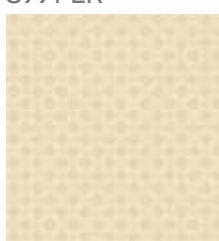
8773-LN



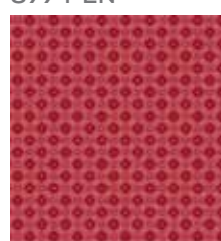
8771-LR



8774-LN



8775-L



8775-LR

Blend with fabrics from
Tuxedo Prints by Kathy Hall



8658-LB



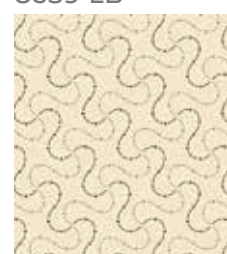
8658-LK



8659-LB



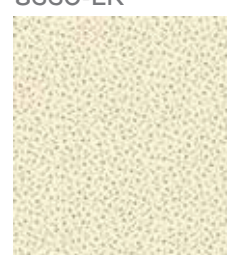
8659-LR



8660-LK



8661-LK



8662-LK



8662-LN

Fabrics are used in the Dark or Light
quilt pattern as indicated.
All Tuxedo Prints fabrics are used in
both Light and Dark quilt patterns.

Fabrics shown are
25% of actual size.