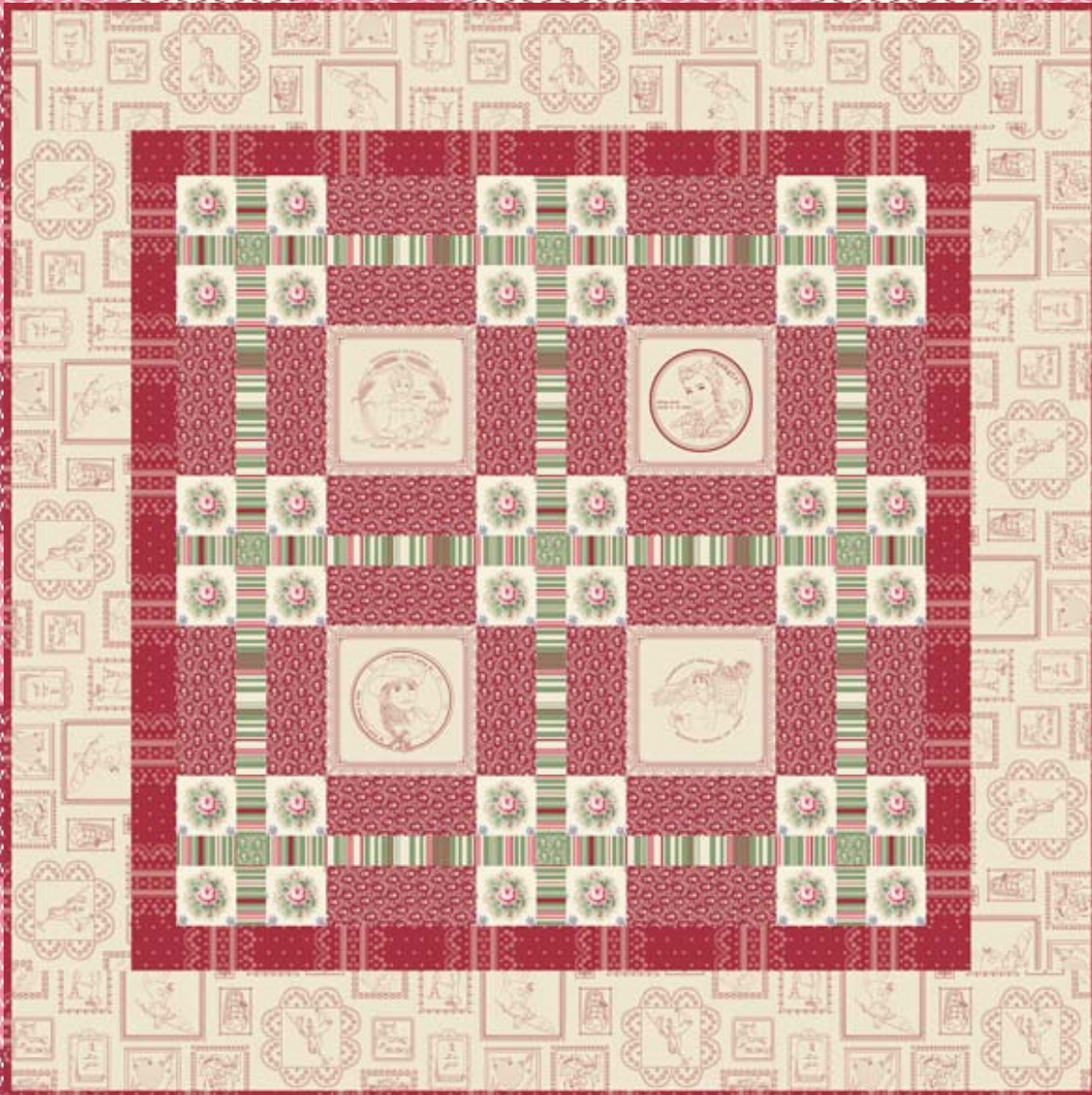


# FARMGIRL



*Featuring*  
**The Farmgirl Collection**  
by MaryJane Butters

Quilt designed by Jean Ann Wright  
Machine quilted by Jan Crandall  
Finished size: 72½" x 72½"



**makower uk**<sup>®</sup>

1384 Broadway · New York, NY 10018 · (800) 223-5678  
[www.andoverfabrics.com](http://www.andoverfabrics.com)

# Farmgirl Quilt

Introducing Andover Fabrics new collection: Farmgirl by MaryJane Butters

Quilt designed by Jean Ann Wright and machine quilted by Jan Crandall

Quilt finishes 72½" x 72½"

4 Pieced Blocks 18" x 18"

## Planning

Stripes and floral fabrics go together nicely in this easy-as-pie wall quilt. The novelty prints add a touch of nostalgia for more pastoral times. Fussy cut the rose print and striped red border to make the quilt extra special.

## Fabric Requirements and Cutting Directions

**Note:** A fat ⅛th is a 9" x 20"-22" cut of fabric. Red striped border strips include 4" extra length for matching stripes. Outer border strips include 2" extra length for mitering.

**4150-LR 2¼ yards Cream with Red Novelty Print (outer border)**

Cut (4) 8½" x 74½" strips, cut lengthwise

**4151-L 1 yard Rose Print (block corners, pieced border)**

Cut (36) 4½" squares, fussy cut

**4152-R 1¼ yards Red Stripe (border, binding)**

Cut (4) 3½" x 60½" strips, pieced from 7 width of fabric strips

Cut (8) 2½" x width of fabric strips for binding

**4155-G Fat ⅛ yard Green with White Posies Print (setting squares)**

Cut (9) 2½" squares

**4155-R 1¼ yards Red with White Posies Print (blocks, pieced border)**

Cut (24) 4½" x 10½" rectangles

**4156-G ¾ yard Green and Red Stripe (sashes, pieced border)**

Cut (12) 2½" x 18½" rectangles for sashes, cut crosswise

Cut (12) 2½" x 4½" rectangles for pieced border, cut crosswise

**4219-R 1 full Farmgirl Panel (block centers)**

Cut (4) 10½" squares, fussy cut around printed images

**4153-R 4½ yards Red and Green Squares (backing)**

Cut and piece to fit quilt top with 4" overlap on all sides.

## Making and Assembling the Quilt

1. Read step 6 before cutting red stripe borders. Fussy cut 4½" squares from the rose print and fussy cut 10½" squares from the novelty print panel. Refer to the Block Diagram. Sew red with white posies print rectangles to the sides of the 10½" square. Sew a 4½" rose print square to ends of 2 other red rectangles, and sew to the top and bottom of the unit. Make 4 blocks.



**Block Diagram**

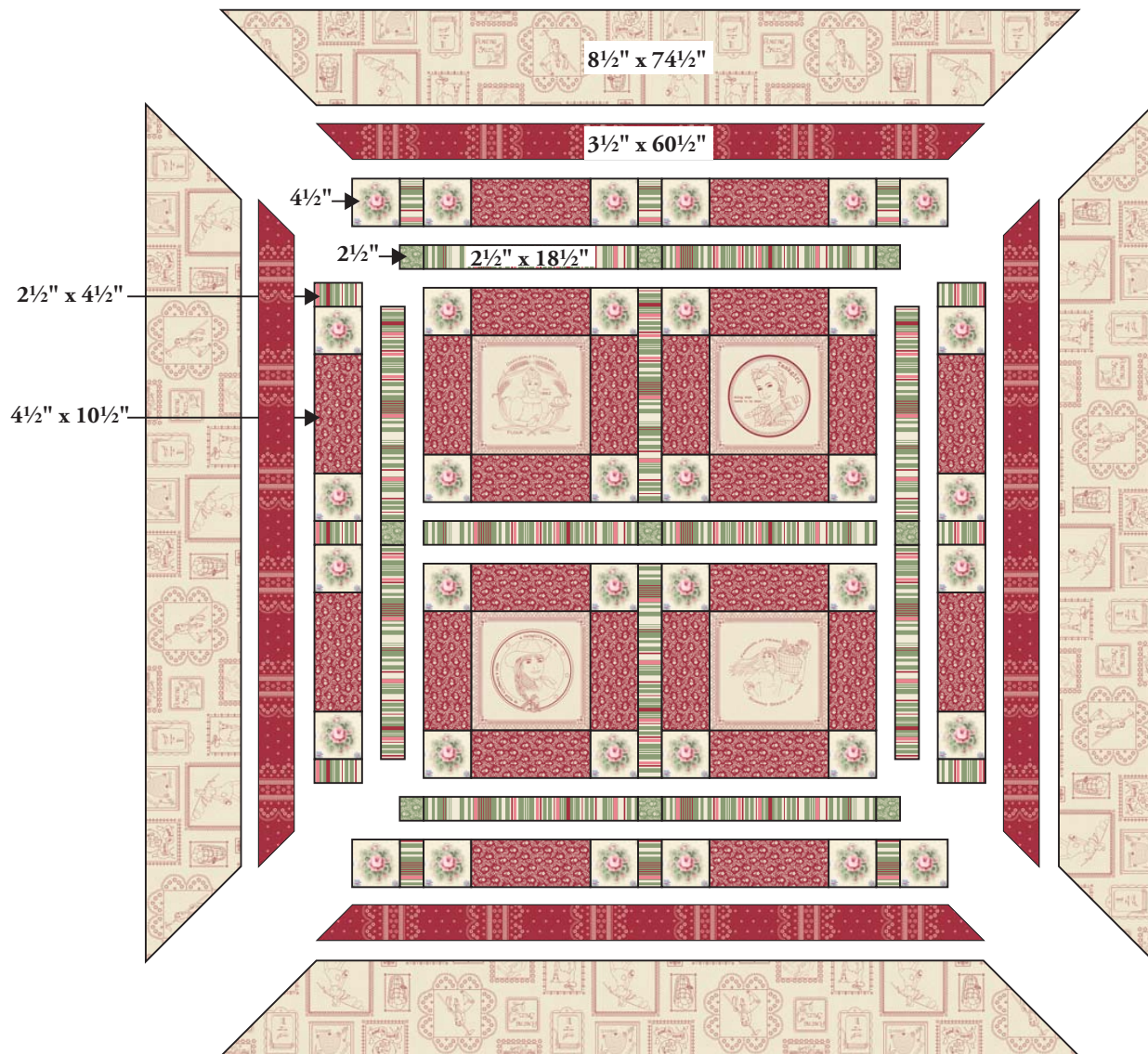
2. Refer to the Quilt Diagram throughout the assembly. Sew a 2½" green square between 2 striped 18½" striped sashes. Press seam allowances toward the sashes. Make 5 pieced sashes like this. Set aside.
3. Sew an 18½" striped sash between 2 blocks to make a block row. Press the seam allowances toward the sash. Repeat to make 2 block rows. Sew a pieced sash from step 2 between the block rows.
4. Sew a pieced sash from step 2 to each side of the quilt. Sew a 2½" green square to each end of remaining pieced sashes. Sew to the top and the bottom of the quilt.

# Farmgirl Quilt

- To make the next border, refer to the Quilt Diagram and join  $4\frac{1}{2}$ " rose print squares,  $2\frac{1}{2}$ " x  $4\frac{1}{2}$ " striped rectangles, and red rectangles in the order shown to make each border. Sew shorter borders to the sides and longer borders to the top and bottom.
- Since the  $3\frac{1}{2}$ "-wide red stripe border strips are cut crosswise, 2-3 strips must be joined in such a way so that the printed stripes look continuous. Near the end of one border strip, measure and mark the center between 2 white stripes. With right sides together, place the marked strip on top of a second strip, aligning the printed stripes at the end. Stitch along the marked line. Press the seam allowance open. Check from the front to be sure that the print looks continuous and the seam is unnoticeable. Add another partial strip in the same way if necessary to make the border at least  $60\frac{1}{2}$ " long. Center a border on each side of the quilt, making certain that the same part of the print is in the middle of each side. Miter the corners, matching the printed stripes where they meet in the corners. Trim the excess to leave a generous  $\frac{1}{4}$ " seam allowance.
- Add the wide cream outer borders to the quilt. Miter the corners and trim the excess.

## Finishing the Quilt

- Layer quilt with batting and backing. Free-motion quilt around motifs in block centers and outer border. Quilt in the ditch around block patches. Quilt red rectangles with a quilting motif of your choice, or quilt around the printed designs. Bind with red stripe to finish the quilt.



Quilt Diagram

1384 Broadway  
 New York, NY 10018  
 (800) 223-5678  
 www.andoverfabrics.com

# Farmgirl

by MaryJane Butters



4150-LR\*



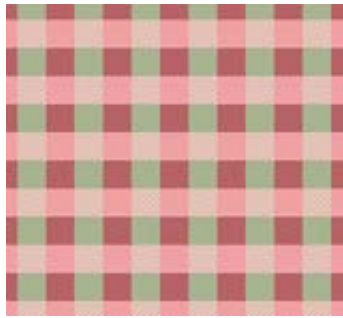
4219-G



4152-R\*



4151-C



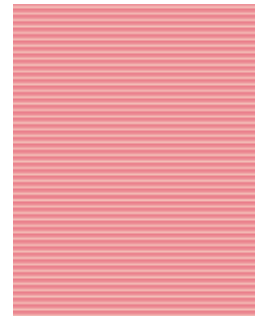
4153-R\*



4155-G\*



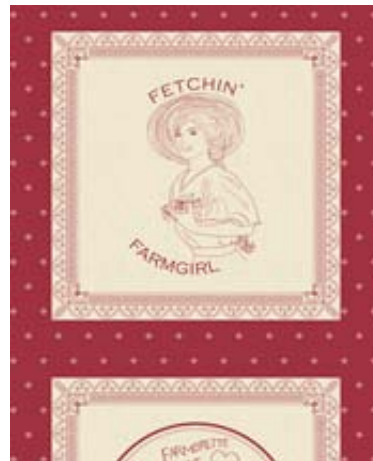
4156-G\*



4157-E



4150-LB



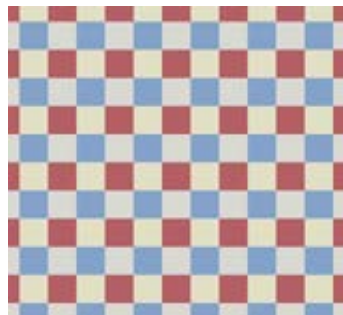
4219-R\*



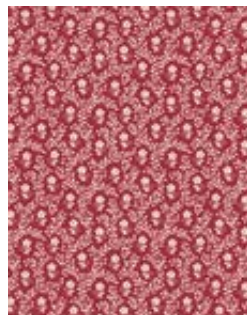
4152-B



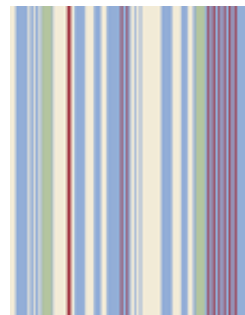
4151-L\*



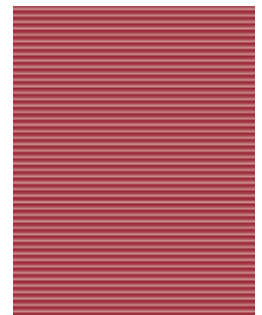
4153-B



4155-R\*



4156-B



4157-R

\*Indicates fabric used in quilt pattern. Fabrics shown are 15% of actual size.

Free Pattern Download Available at [www.andoverfabrics.com](http://www.andoverfabrics.com)