

# Hollyhocks

BY JO MORTON

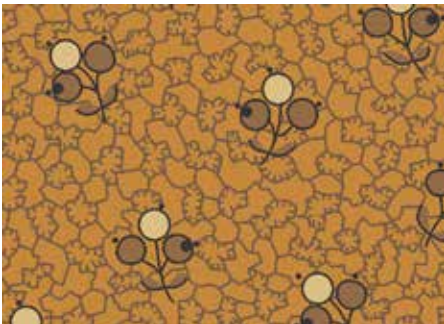


Garden Walk quilt designed and made by **Candy Hargrove**

Quilted by: **Maggi Honeyman**

Quilt Size: **69" x 69"**

[andoverfabrics.com](http://andoverfabrics.com)



## About Hollyhocks

The large leaf pattern with flowers was a great discovery, and then I had the fun of selecting companion pieces to make these fabrics a perfect addition to our fabric collections. I know many beautiful quilts will be made with this group.

andover



makower uk  
*The Henley Studio*

Free Pattern Download Available

1384 Broadway New York, NY 10018  
Tel. (800) 223-5678 • [andoverfabrics.com](http://andoverfabrics.com)

# Garden Walk Quilt



Introducing Andover Fabrics new collection: **HOLLYHOCKS** by Jo Morton

Quilt designed by Candy Hargrove. Quilted by Maggi Honeyman

Quilt finishes 69" x 69 "  
25 Blocks: 7½" x 7½"

*A lovely flower is honored in the large-scale print used to border this traditional pieced block quilt. The time-honored design uses today's methods for quickly making the pieced triangles for the blocks. Scrappy placement of the light and dark prints makes each block different from every other one.*

## Cutting Directions

**Note:** Read assembly directions before cutting patches. All measurements are cut sizes and include ¼" seam allowances. Border measurements include 2" extra length plus ¼" seam allowances. WOF designates the width of fabric from selvedge to selvedge (approximately 42" wide).

### Fabric A

Cut (2) top/bottom borders 6½" x 71½", cut lengthwise  
Cut (2) side borders 6½" x 59½", cut lengthwise

### Fabric B

Cut (4) squares 12" x 12", cut in half diagonally twice to make 16 quarter-square triangles  
Cut (16) squares 8" x 8"  
Cut (2) squares 6¼" x 6¼", cut in half diagonally to make 4 half-square triangles

### Fabric C

Cut (8) strips 2½" x WOF for binding

### Fabric D

Cut (2) top/bottom borders 2½" x 59½", cut crosswise and pieced  
Cut (2) side borders 2½" x 55½", cut crosswise and pieced

### 7 Lt. Prints From each:

Cut (43) squares 2" x 2" (300 total)  
Cut (3 or 4) squares 5" x 5" (25 total)

### 7 Dk. Prints From each:

Cut (18) squares 2" x 2" (125 total)  
Cut (3 or 4) squares 5" x 5" (25 total)

### Backing

Cut (2) panels 39" x 77", pieced to fit quilt top with overlap on all sides

## Fabric Requirements

		Yardage	Fabric
<b>Fabric A</b>	bouter border	2½ yards	7745-K
<b>Fabric B</b>	setting	1½ yards	7746-KL
<b>Fabric C</b>	binding	⅝ yard	7749-K
<b>Fabric D</b>	inner border	⅝ yard	7751-RY
<b>7 Lt. Prints</b>	blocks	fat ¼ yard each	
	7750-K 7750-KR	7823-N 7824-N	
	7827-BK 7827-NY	3394-LO	
<b>7 Dk. Prints</b>	blocks	fat ¼ yard each	
	7748-KN 7751-K	7751-R 2880-K	
	3449-R 5606-N	7161-BN	
<b>Backing</b>		4½ yards	7750-RY

# Garden Walk Quilt

## Making the Quilt

1. The blocks use half-square triangles (HST) that finish  $1\frac{1}{2}$ " square. Use your favorite method to make HST, or follow these directions. Draw centered horizontal and vertical lines and diagonal lines on the wrong side of each light 5" square (Diagram 1). Place a marked square on a dark 5" square, right sides together. Sew  $\frac{1}{4}$ " seam on each side of the 2 diagonal lines (Diagram 1). Cut into 4 squares by cutting on the vertical and horizontal lines (Diagram 2). Cut each small square diagonally (Diagram 3). Press open to make pieced HST (8 total from this unit). Trim each HST to 2" x 2". Join light and dark 5" squares in different combinations, and repeat these steps to make a total of 200 HST.

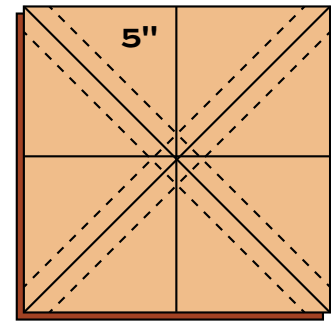


Diagram 1 – Make 25

2. Referring to the block diagram, arrange 8 HST, 12 different light 2" squares, and 5 different dark 2" squares in 5 rows of 5 patches each. Stand back to be certain that the HST are rotated as shown. Join the patches in rows, and then join the rows.

3. Referring to the Quilt Diagram, on a design wall or large flat surface, arrange and then join the blocks and Fabric B squares and triangles in diagonal rows. Join the rows. Trim the outer edges of the quilt to square it if needed.

4. Sew shorter Fabric D borders to the sides. Trim ends even with the quilt. Sew longer borders to the top and bottom and trim. Repeat to sew on Fabric A borders.

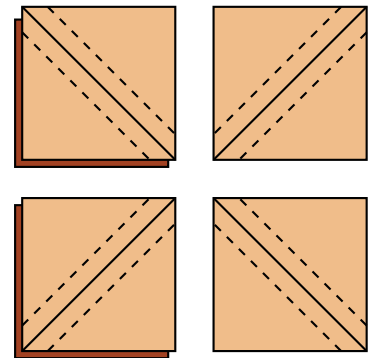
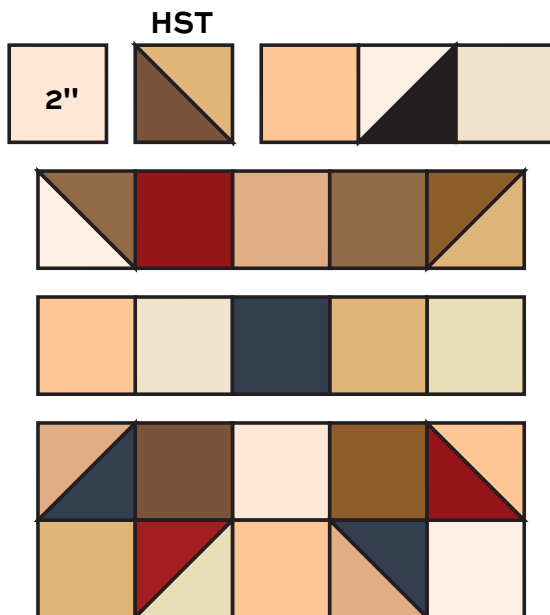


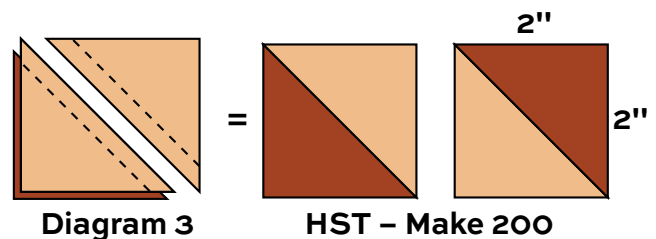
Diagram 2

## Finishing the Quilt

5. Layer the quilt with batting and backing and baste. Quilt in the ditch around borders and block patches. Quilt around the printed motifs in the outer border. Bind to finish the quilt.

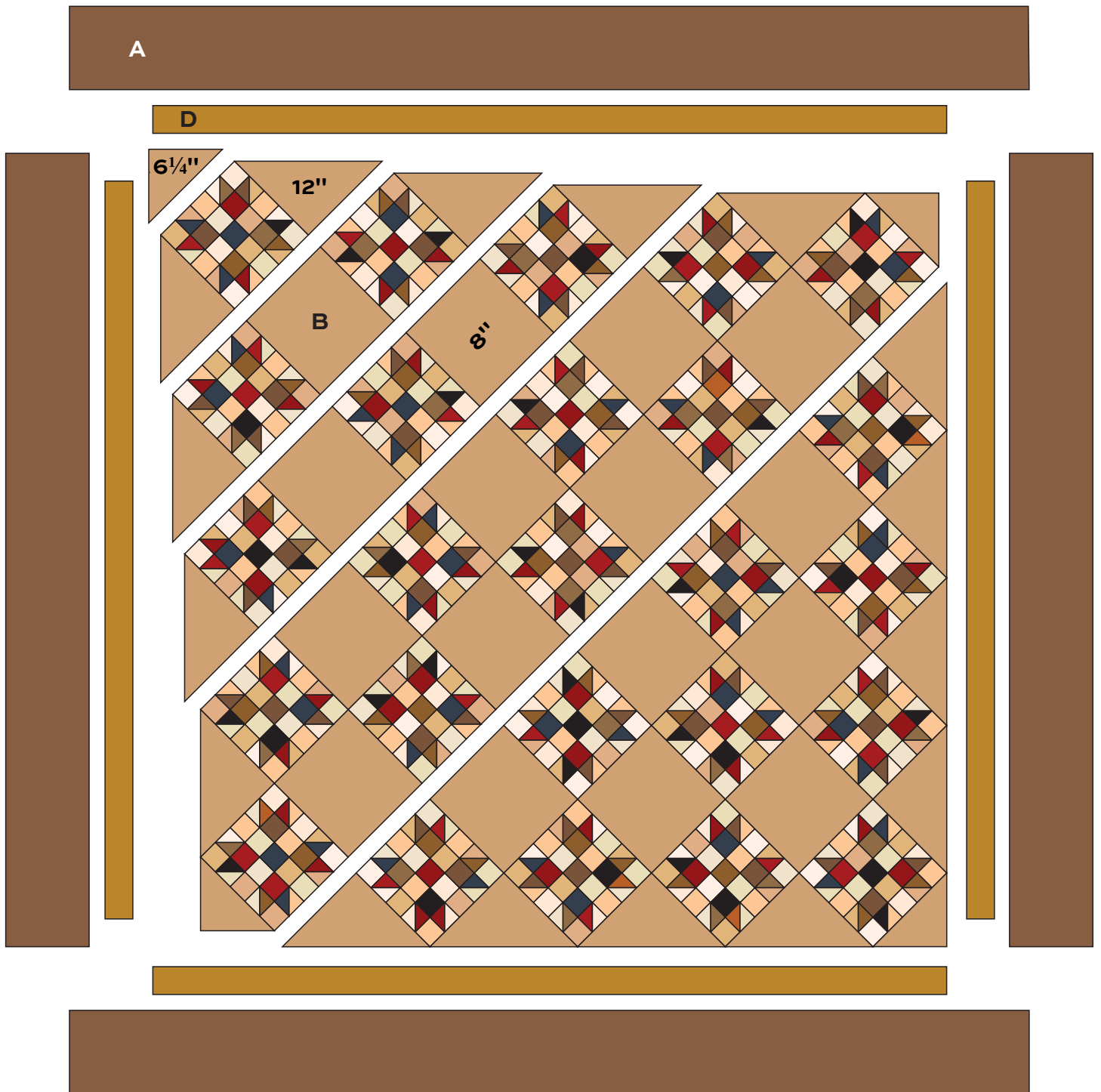


Block – Make 25



# Garden Walk Quilt

---



Quilt Diagram

# Hollyhocks

BY JO MORTON



7745-K\*



7745-R



7746-KR



7748-KN\*



7746-KL\*



7748-KO



7747-K



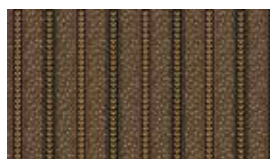
7747-R



7746-RL



7748-RG



7749-K\*



7749-R



7749-RG



7751-K\*



7751-R\*



7750-K\*



7750-KR\*



7750-RY\*



7751-RN



7751-RY\*

Blend with Jo's Best Friends fabrics by Jo Morton



2880-K\*



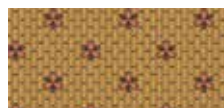
3228-Y



3229-G



3449-R\*



4882-N



3394-LO\*



5606-N\*

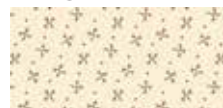


7161-BN\*

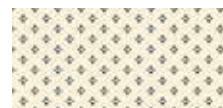
Blend with Mill Run Shirtings fabrics by Jo Morton



7823-N\*



7824-N\*



7827-BK\*



7827-NY\*

\*Indicates fabrics used in quilt pattern. Fabrics shown are 25% of actual size.

andover

makower uk  
The Henley Studio

Free Pattern Download Available

1384 Broadway New York, NY 10018  
Tel. (800) 223-5678 • andoverfabrics.com

11/1/14