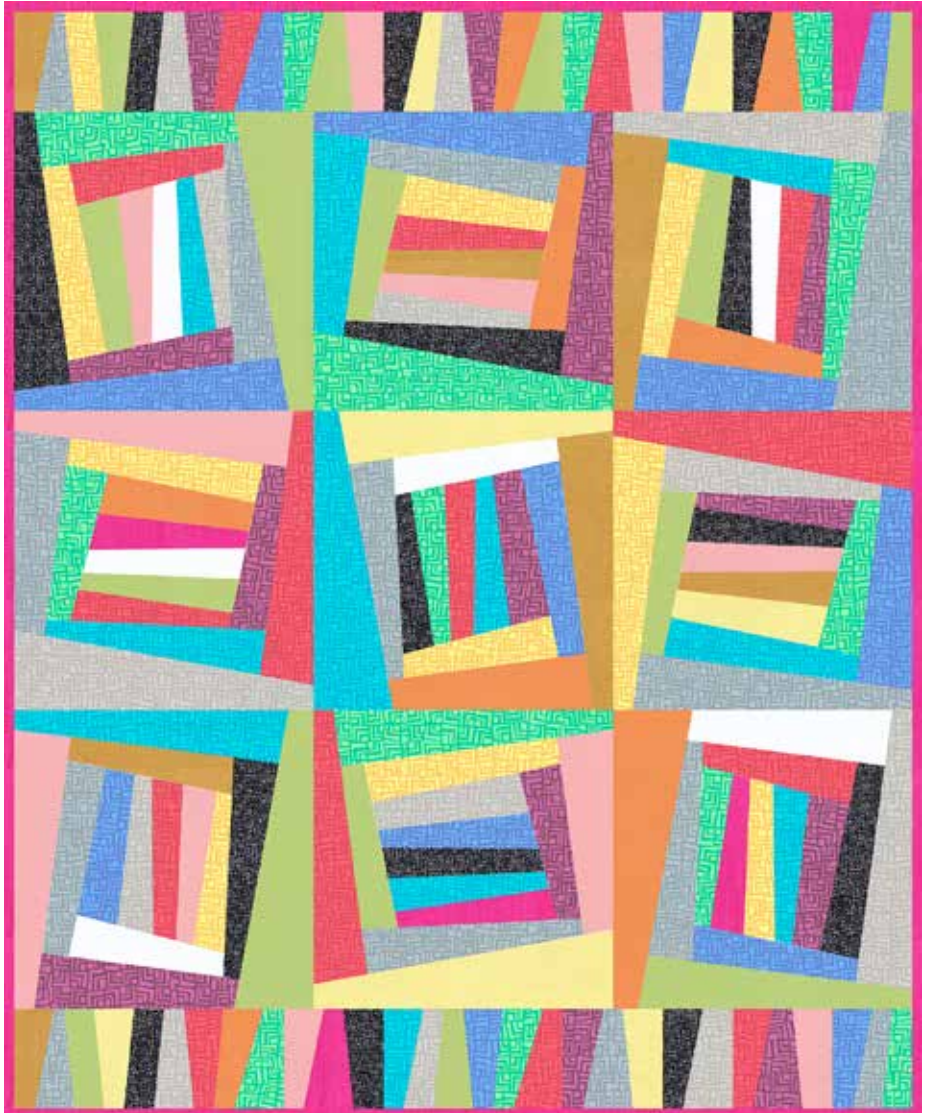


Improv

BY CAROL VAN ZANDT



Quilt Back



Improv Quilt designed by:
Carol Van Zandt

Quilt Size: **45" x 55"**

andoverfabrics.com

About Improv

Everything is a bit askew in the world of IMPROV, but this pattern keeps moving and works with everything. — *Carol Van Zandt*

andover



makower uk
The Henley Studio

Free Pattern Download Available

1384 Broadway New York, NY 10018
Tel. (800) 223-5678 • andoverfabrics.com

2/15/15

Improv Quilt



Introducing Andover Fabrics new collection: **IMPROV** by Carol Van Zandt

Quilt designed by Carol Van Zandt

Quilt finishes 45" x 55"

9 Blocks: 15" x 15"

3 Backing Blocks (optional): 15" x 15"

Here is a lively and colorful design made with modern techniques and fabric that also pays homage to our quilting past. The skewed Log Cabin blocks are simple and quick to make, and they are template-free. Each block is slightly different from any other, so your quilt will be one-of-a-kind.

Fabric Requirements

Fabric A	blocks, binding	Yardage	Fabric	
14 Brights	blocks	1 yard	A-T-Blaze	
7848-B	7848-C	7848-G	7848-K	7848-N
7848-P	7848-R	7848-T	7848-WW	7848-Y
A-T-Envy	A-T-Indian Summer	A-T-Peony	A-T-Smudge	
Pieced Backing or Plain Backing		1½ yards	A-T-Flash	
		3 yards	A-T-Flash	

Also needed: 15½" or larger square acrylic ruler

Cutting Directions

Note: Read assembly directions before cutting patches. WOF designates the width of fabric from selvedge to selvedge (approximately 42" wide).

Fabric A

Cut (6) strips 2½" x WOF for binding

Cut strips for blocks (read directions for cutting)

14 Brights From each:

Cut strips for blocks (read directions for cutting)

Pieced Backing

Cut (1) panel 20½" x 45½"

Cut (1) panel 10½" x 45½"

Cut (1) panel 5½" x 45½"

Cut strips for blocks (read directions for cutting)

or Plain Backing

Cut (2) panels 30" x 50"

Cut strips for blocks (read directions for cutting)

Making the Quilt

1. The pieced band and 3 blocks on the back of the quilt are optional. Fabric is sufficient to make the back as described in Step 8. The blocks are pieced with random strips, and then each block is trimmed to a 15½" square. We suggest that you cut the strips needed as each block is made. Cut the half-yard fabric strips crosswise (WOF). Leftover fabric is used for the pieced borders. From 5 different fabrics cut a strip approximately 2½"-3" x 10" for the block center. Stitch 2 strips right sides together. Press open. Trim the outer edges at slight angles (Diagram 1). Sew a third strip to the first pair, press open, and trim the third strip at a different angle. Add the final 2 strips to the sides. Trim the entire pieced unit to approximately 8" x 8", angling the sides as you wish (Diagram 2). The center should NOT be a perfect square.

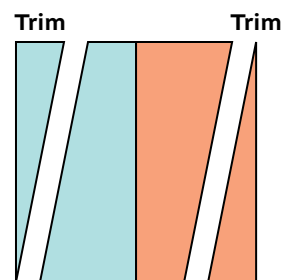


Diagram 1

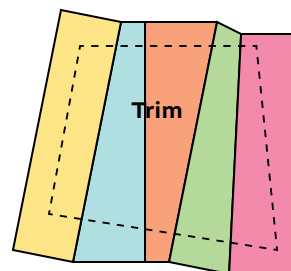


Diagram 2

Improv Quilt

2. The outer strips are stitched in order like a Log Cabin block. From each of 4 different fabrics, cut a strip approximately 3" wide and approximately 12" long. Sew a strip along the center's edge with all the seams (Diagram 3). Press all seam allowances away from the center. Trim the ends of the strip at the same angles as the sides of the unit so there is a straight edge for adding the next strip. Working in a clockwise direction, sew a second strip to the center and trim the ends. Add a third and a fourth strip around the center, trimming ends. Cut the unit to approximately 10"-11", angling the sides so the unit is not square (Diagram 4).

3. For the last "round" of strips, cut 4 different strips 4"-4½" wide and 16"-17" long. Beginning on the same side as the first strip added in Step 2, sew the strips around the center in clockwise order, trimming ends before adding the next strip. Finally, using a large, square acrylic ruler to measure, trim the pieced unit to a 15½" x 15½" square (Diagram 5). Be certain that your block is square.

4. Hint: If your first block is too small to trim to 15½", or you aren't satisfied with it after trimming into a square, change the width that you cut the strips in each step, or trim the unit at greater or lesser angles in Steps 1 and 2. For the quilt front, make 9 blocks total. For some of the blocks, add strips to the center in Steps 2 and 3 in a counterclockwise direction (Diagram 6).

5. Repeat these steps to make 3 more 15½" blocks for the pieced backing, if you wish.

6. Referring to the Quilt Diagram, join blocks in 3 rows with 3 blocks each, rotating the blocks as desired. Join the rows.

7. To make the top and bottom pieced borders, cut the leftover fabrics into patches that are approximately 2½" wide and 8" long. Sew strips side by side, trimming the edge of each strip at an angle after it is stitched in place (Diagram 7). Add strips to make a border that is at least 46" long. Trim the border 5½" wide and 45½" long. Make a second border like this. Sew borders to the top and bottom of the quilt.

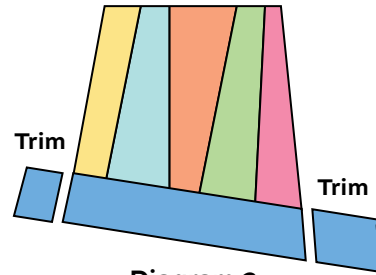


Diagram 3

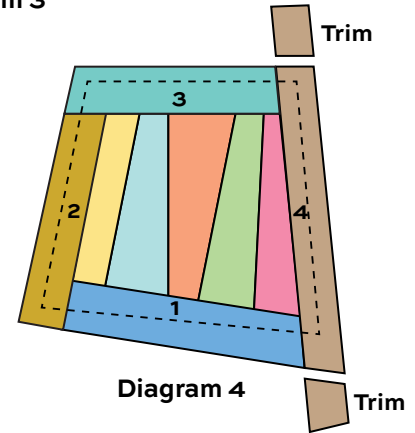
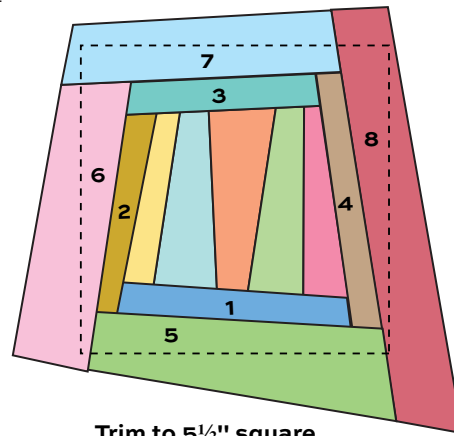


Diagram 4



Trim to 5½" square

Diagram 5

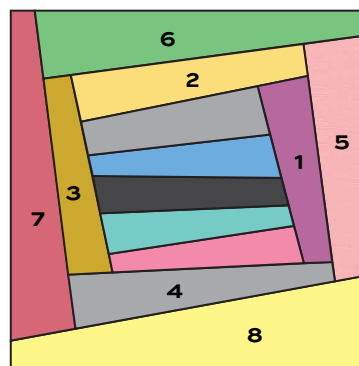


Diagram 6

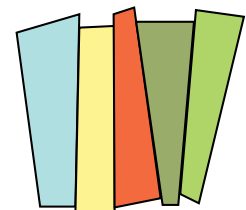
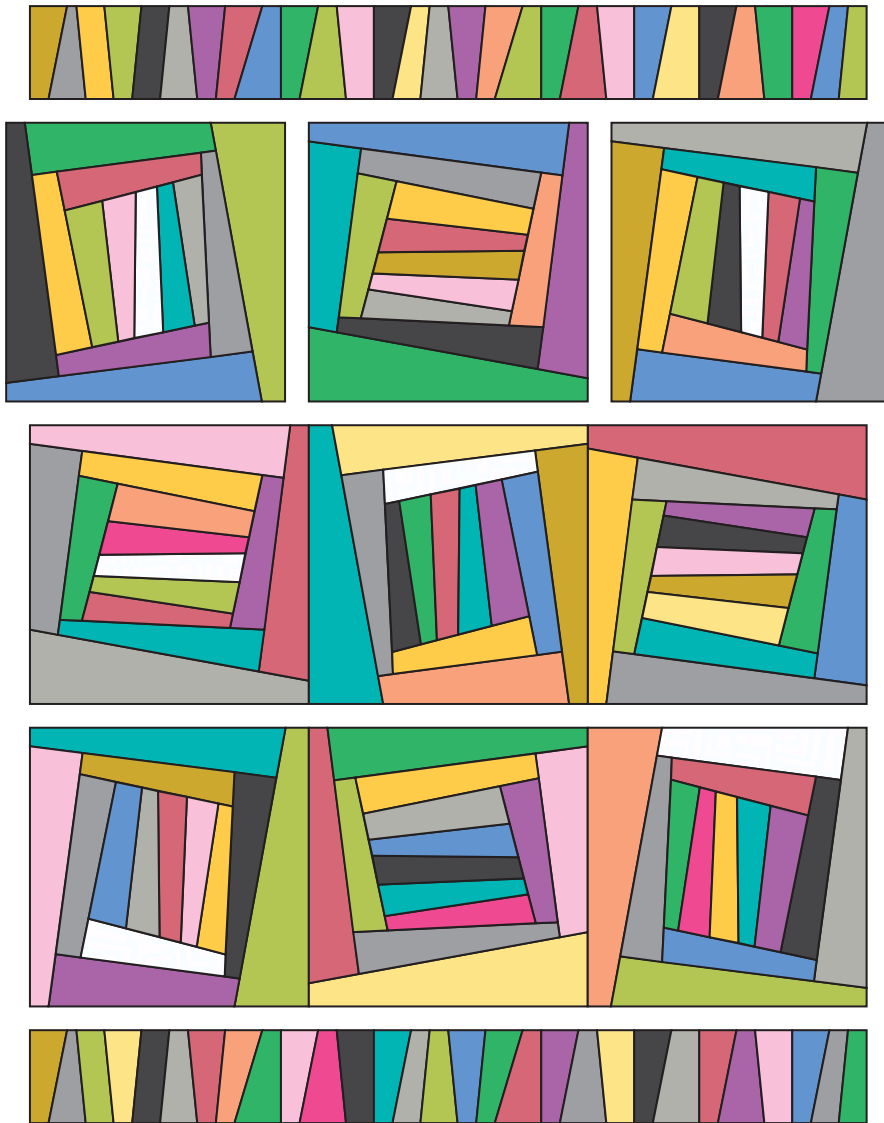


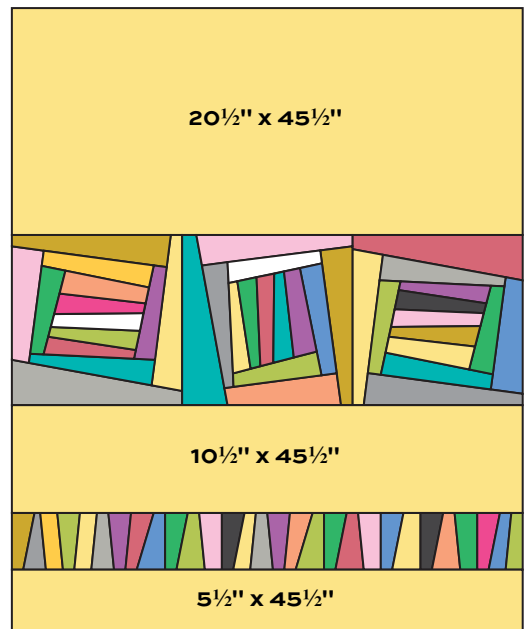
Diagram 7



Quilt Diagram

Finishing the Quilt

- To make the block row for the back, sew 3 pieced blocks from Step 5 to make a row. Make another pieced border as you did in Step 7. Referring to the backing diagram, join the block row and the pieced border with the backing fabric strips in the order shown. Layer the quilt with batting and backing and baste. Quilt in the ditch around border and block patches. Bind to finish the quilt.



Quilt Back

Improv

BY CAROL VAN ZANDT



7848-B



7848-C



7848-G



7848-K



7848-N



7848-P



7848-R



7848-T

Blend with Andover fabrics from
A-T-Textured Solids



A-T-Blaze



A-T-Envy



A-T-Flash



A-T-Indian Summer



7848-WW



7848-Y



A-T-Peony



A-T-Smudge

All fabrics are used in quilt pattern. Fabrics shown are 50% of actual size.

andover



makower uk
The Henley Studio

Free Pattern Download Available

1384 Broadway New York, NY 10018
Tel. (800) 223-5678 • andoverfabrics.com