

# Perennial

SARAH GOLDEN

**a**  
100  
years



Square by Square Quilt  
designed by: **Janet Houts**

Quilt Size: **72" x 72"**

Skill Level:

**Beginner / Intermediate**

[andoverfabrics.com](http://andoverfabrics.com)

andover • [makower.uk](http://makower.uk)

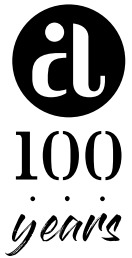
Free Pattern Download Available

1384 Broadway New York, NY 10018  
Tel. (800) 223-5678 • [andoverfabrics.com](http://andoverfabrics.com)

# Square by Square Quilt

Introducing Andover Fabrics new collection: **PERENNIAL** by Sarah Golden

Quilt designed by Janet Houts



Quilt finishes 72" x 72"

9 Blocks: 24" x 24"

Pillow: 24" x 24"

*Suitable for a beginner's first quilt, this quick project will appeal to the person who enjoys working with fanciful, bold prints with a retro palette.*

## Cutting Directions

**Note:** Read assembly directions before cutting patches. All measurements are cut sizes and include 1/4" seam allowances. A fat 1/8 is a 9" x 20"-22" cut of fabric. A fat 1/4 is an 18" x 20"-22" cut. WOF designates the width of fabric from selvedge to selvedge (approximately 42" wide).

**Fabric A** Cut (8) strips 2 1/2" x WOF for binding

**Fabric B** Cut (4) squares 8 1/2" x 8 1/2"

**2 Lights** From each:  
Cut (9) strips 4 1/2" x WOF, cut to make the following:  
(Read Step 1 before cutting)  
(18) strips 4 1/2" x 12 1/2"  
(18) strips 4 1/2" x 8 1/2"

**16 Fat 1/8** From each:  
Cut (2) squares 8 1/2" x 8 1/2"

**Backing** Cut (2) panels 40" x 80", pieced to fit quilt top with overlap on all sides

## Cutting for One Pillow

**4 Fat 1/8** From each:  
Cut (1) square 8 1/2" x 8 1/2" (4 total squares)

**2 Lights** From each:  
Cut (2) strips 4 1/2" x 12 1/2"  
Cut (2) strips 4 1/2" x 8 1/2"

**Backing** Cut (1) square 25" x 25"  
*Optional: muslin square 25" x 25" for inner lining*

## Fabric Requirements

		Yardage	Fabric
<b>Fabric A</b>	binding	3/4 yard	9570-B
<b>Fabric B</b>	blocks	fat 1/4 yard	9570-CE
<b>2 Lights</b>	blocks	1 1/2 yards each	9568-C 9569-CE
<b>16 Fat 1/8</b>	blocks	fat 1/8 yard each	9564-B 9564-C 9564-E 9565-B 9565-CE 9565-E 9566-BG 9566-CY 9566-EL 9567-BG 9567-BL 9567-CG 9567-CY 9567-E 9567-EK 9568-BE
<b>Backing</b>		4 1/2 yards	9569-EL

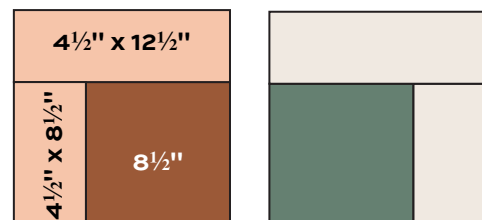
Yardage for 2 lights is sufficient to make 2 pillow tops.

An additional fat 1/8 yard of each of 4 prints is required for each pillow.

3/4 yard extra needed for each pillow backing

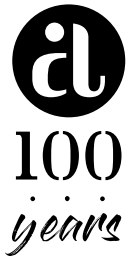
## Making the Quilt

1. From each light print 4 1/2" x WOF strip, cut 2 rectangles 4 1/2" x 12 1/2" and 2 rectangles 4 1/2" x 8 1/2" (18 of each size total). Save the remaining yardage for pillows.
2. Choose the print squares you want to join with light pink strips, and the squares you want to join with the off-white strips. Note that in the quilt, each pair of blocks is made alike. Referring to the Quarter Block diagrams, join the strips to each square to make a quarter block. Make 4 quarter blocks with Fabric B squares, 2 with pink strips and 2 with off-white strips. Make a total of 36 quarter blocks.

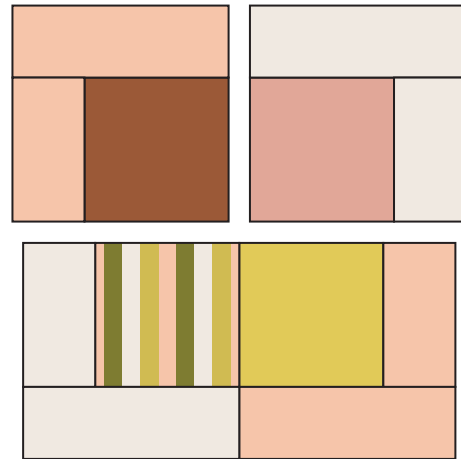


Quarter Blocks

# Square by Square Quilt



- Join 4 quarter blocks of your choosing to make a block, noting the position of the off-white and pink strips. Make 9 blocks.
- On a large design wall or flat surface, arrange the blocks until you are satisfied with the placement, referring to the Quilt Diagram and the photograph. Join the blocks into 3 rows, and then join the rows.



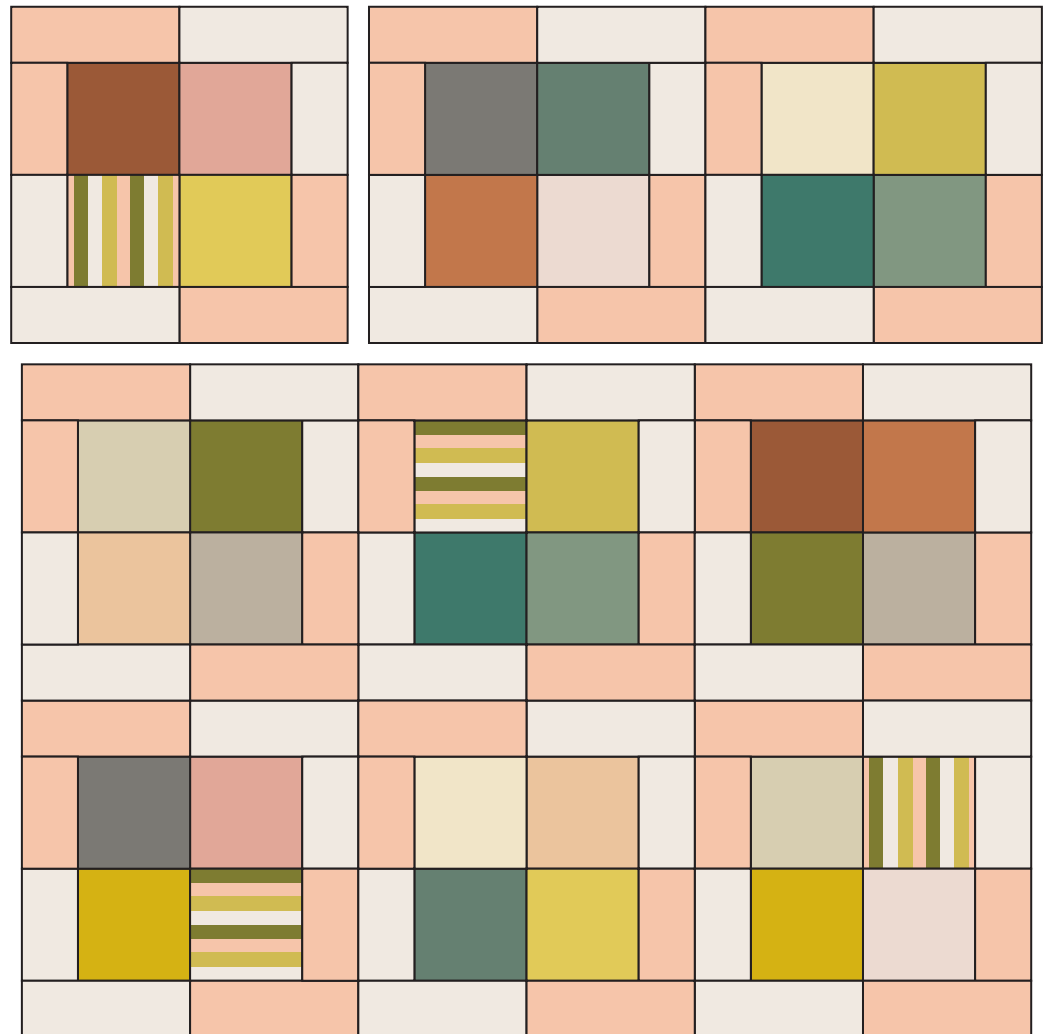
Block – Make 9

## Finishing the Quilt

- Layer the quilt with batting and backing and baste. Quilt in the ditch around borders and block patches. Quilt around the printed motifs in the blocks. Or, quilt an overall motif. Bind to finish the quilt.

## Making a Pillow

- Cut an 8½" square from each of 4 prints. Cut the light strips listed above. Follow directions above to make 4 quarter blocks. Join these together to make the pillow top.
- If you wish to quilt the pillow top, layer an inner lining, batting, and block, and quilt as desired.
- Place the pillow top right sides down onto the 25" square backing. Stitch all around, in a ½" seam, including all 4 corners. Leave a 12" opening along one side. Trim the corners and turn pillow right side out. Stuff with polyfil or a 24" pillow form. Stitch opening closed.



Quilt Diagram

# Perennial

SARAH GOLDEN



100  
years



9564 B\*



9564 C\*



9564 E\*



9570 B\*



9565 B\*



9565 CE\*



9565 E\*



9570 CE\*



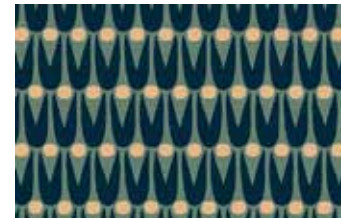
9567 BG\*



9567 BL\*



9567 CG\*



9566 BG\*



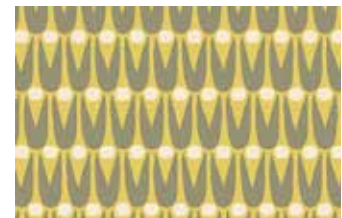
9567 CY\*



9567 E\*



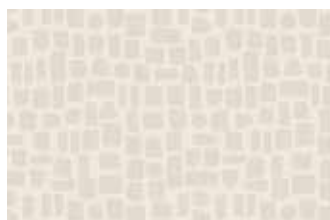
9567 EK\*



9566 CY\*



9568 BE\*



9568 C\*



9568 E



9566 EL\*



9569 BG



9569 CE\*



9569 EK



9569 EL\*

\*Indicates fabrics used in quilt pattern. Fabrics shown are 25% of actual size.

andover

makower uk

Free Pattern Download Available

1384 Broadway New York, NY 10018  
Tel. (800) 223-5678 • andoverfabrics.com